

# BEHIND THE NUMBERS

Why does MOM stats say unemployment is low when so many of my friends are unemployed and can't find work?

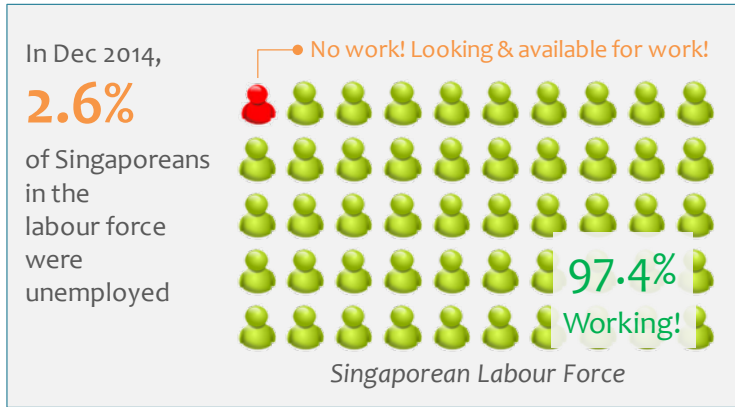
Low unemployment – How low is low? What are we comparing with?

The **Labour Force**, using unemployment rate!

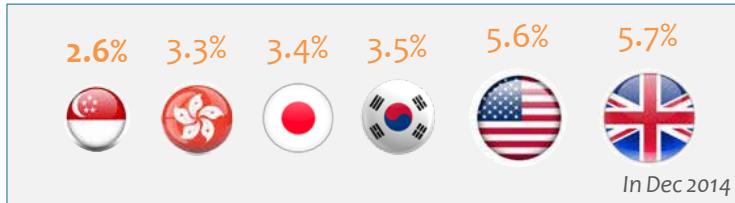


Singapore's unemployment rate shows that

**relatively few Singaporeans** who are interested in work (or who are in the labour force) are jobless and looking and available for work



Furthermore, our unemployment rate is **lower than most countries**

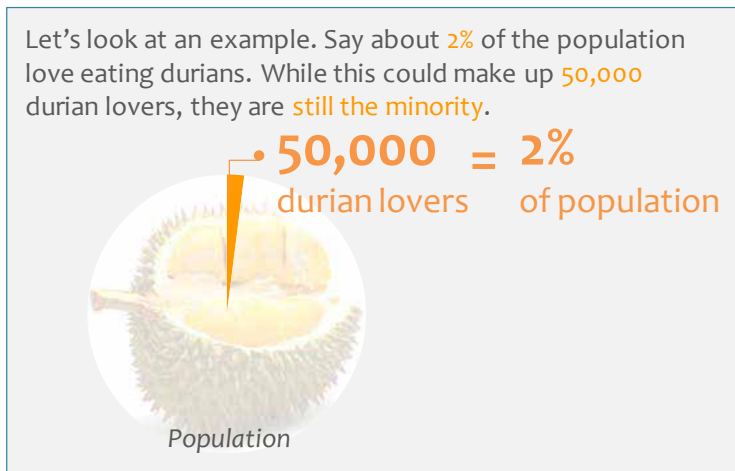


Then why do I still see so many people unemployed? Could it be because there are not enough jobs to go around?



**No**, we actually have more job openings than job seekers. In December 2014, there were 143 job openings per 100 job seekers.

In actual fact, a **low unemployment rate** in percentage terms **doesn't necessarily mean an insignificant number** of unemployed persons



So, what do all these mean?

Look at the number of unemployed persons and the unemployment rate together for a clearer picture!

The number of unemployed persons help us gauge the magnitude of the situation, i.e. How many people are affected?

The unemployment rate offers a basis for comparison with other countries of differing labour force size. It places the number of unemployed persons in the context of the labour force (or those interested in work).

Both number and rate are defined based on international guidelines recommended by the International Labour Organisation.