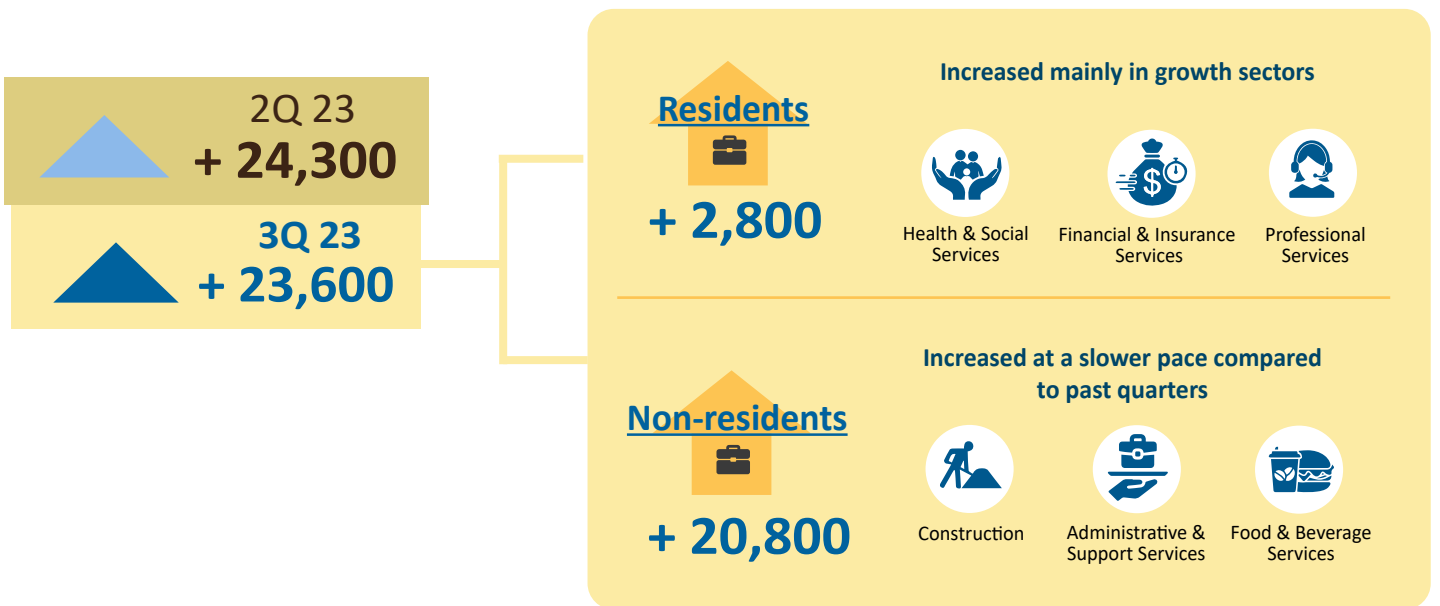


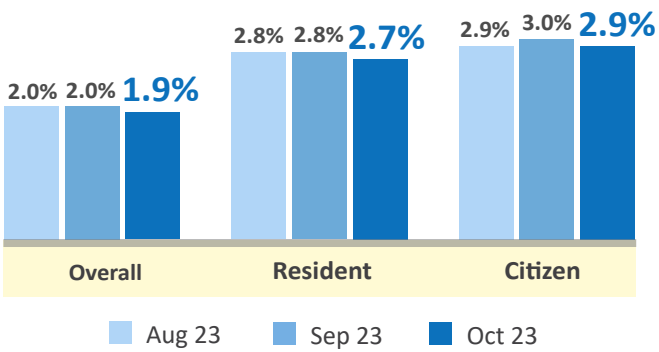
### TOTAL EMPLOYMENT

Continued to grow with increases in both resident and non-resident employment



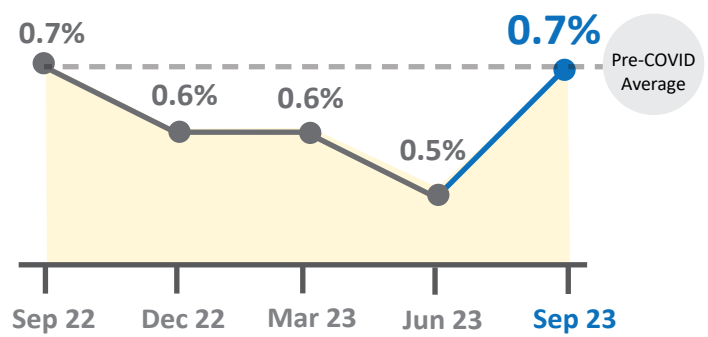
### UNEMPLOYMENT RATES

Remained low



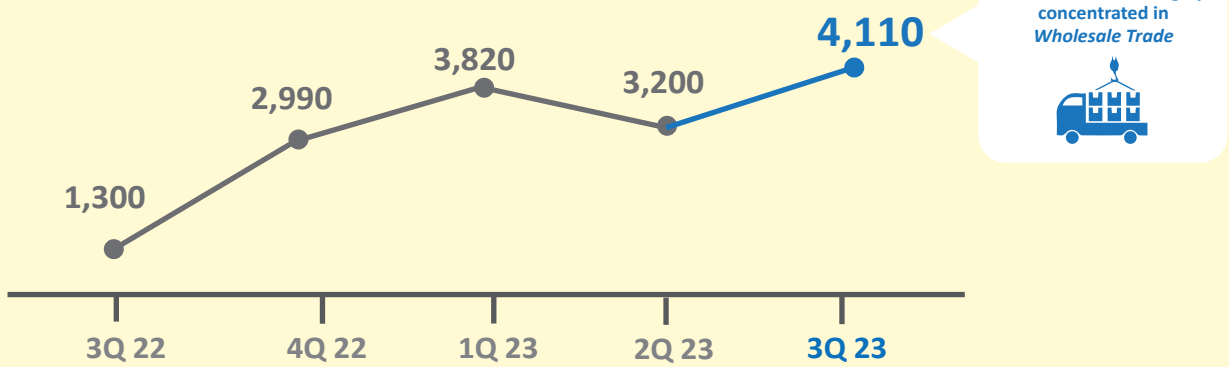
### RESIDENT LONG-TERM UNEMPLOYMENT RATES

Rose, but remained comparable to the pre-COVID average



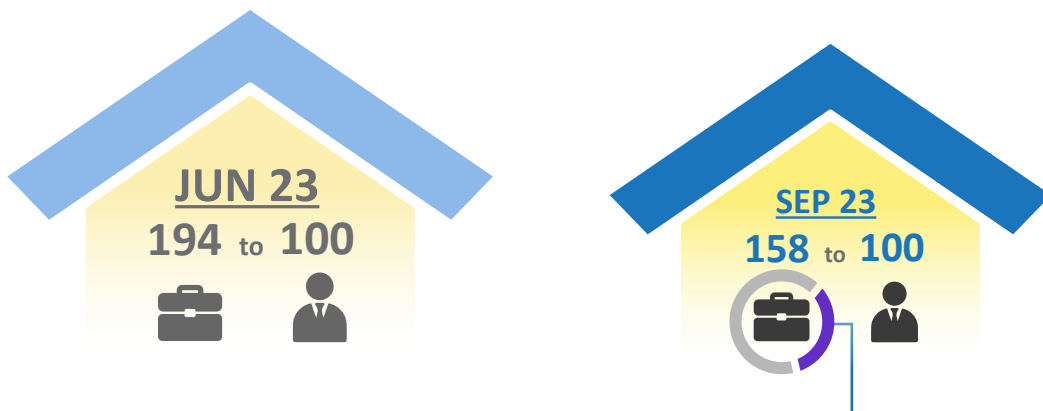
### RETRENCHMENTS

Mainly due to reorganisation or restructuring



### RATIO OF JOB VACANCIES TO UNEMPLOYED PERSONS

Declined, but a significant proportion of job vacancies remained in growth sectors



Nearly one-third of job vacancies were in growth sectors, which tend to have higher-paying jobs



To know more about these indicators, please visit [stats.mom.gov.sg](https://stats.mom.gov.sg)