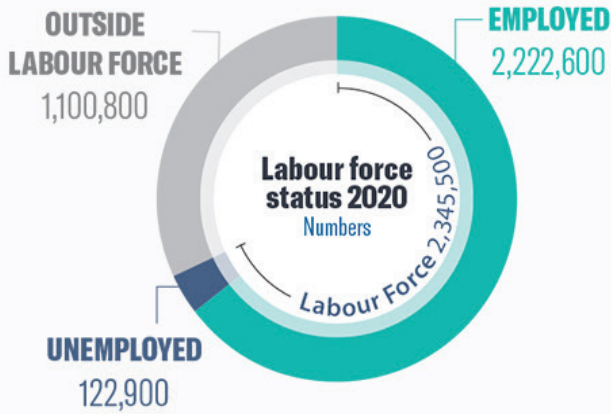


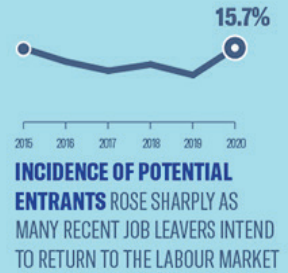
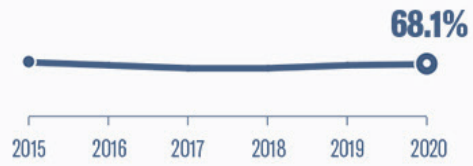
KEY INDICATORS

LABOUR FORCE



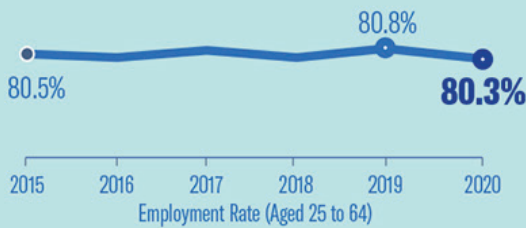
LABOUR FORCE PARTICIPATION RATE

LABOUR FORCE PARTICIPATION RATE HELD STEADY IN 2020



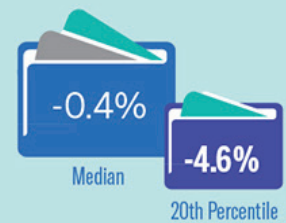
EMPLOYMENT RATE

FOR RESIDENTS AGED 25-64 REMAINED CLOSE TO AVERAGE IN THE PAST 5 YEARS



REAL MEDIAN INCOME FELL, STEEPER DECLINE AT THE 20TH PERCENTILE BUT HELP FROM GOVERNMENT TO SUPPLEMENT INCOMES MITIGATED IMPACT

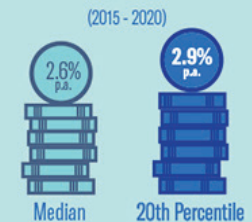
Income includes employer CPF contributions of full-time employed residents



TIME-RELATED UNDER-EMPLOYMENT RATE ROSE

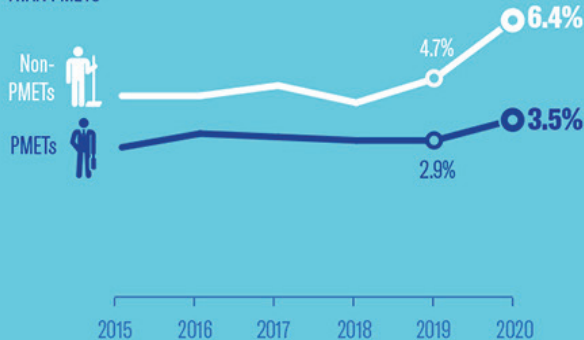


INCOME GROWTH AT 20TH PERCENTILE REMAINED SLIGHTLY HIGHER THAN MEDIAN INCOME GROWTH OVER THE LONGER TERM



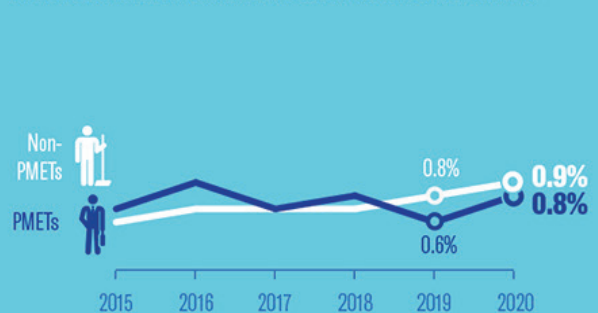
UNEMPLOYMENT RATE

NON-PMETS EXPERIENCED A LARGER INCREASE IN UNEMPLOYMENT RATE THAN PMETS



LONG-TERM UNEMPLOYMENT RATE

INCREASE IN LONG-TERM UNEMPLOYMENT WAS CONSIDERABLY SMALLER

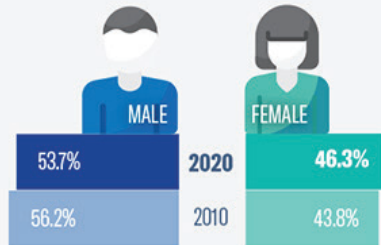


Data pertain to residents and are for June periods, unless otherwise stated.

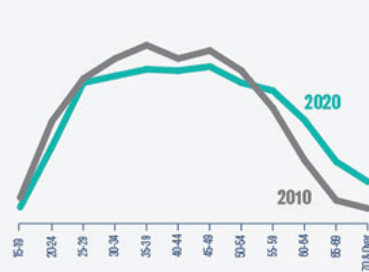
PROFILE

IN THE LABOUR FORCE

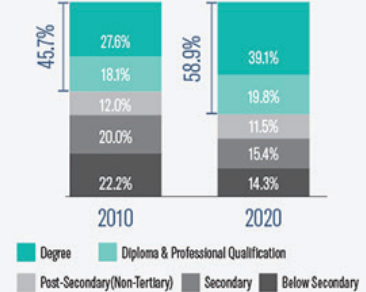
MORE FEMALES DISTRIBUTION BY SEX



MORE OLDER RESIDENTS DISTRIBUTION BY AGE

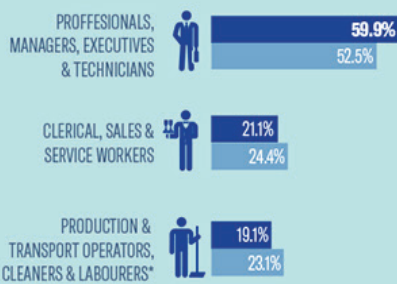


MORE TERTIARY-EDUCATED DISTRIBUTION BY HIGHEST QUALIFICATION ATTAINED



EMPLOYED RESIDENTS

BY OCCUPATIONAL GROUP



* Includes Agricultural & Fishery Workers and Workers Not Elsewhere Classified

BY EMPLOYMENT STATUS, 2020

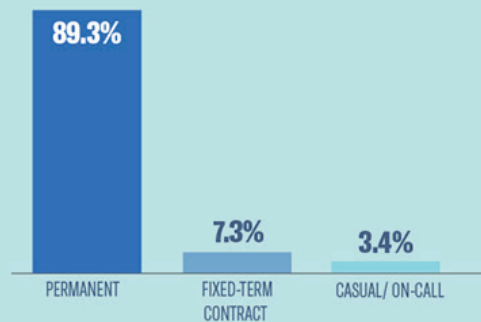


FULL-TIME VS PART-TIME EMPLOYMENT, 2020



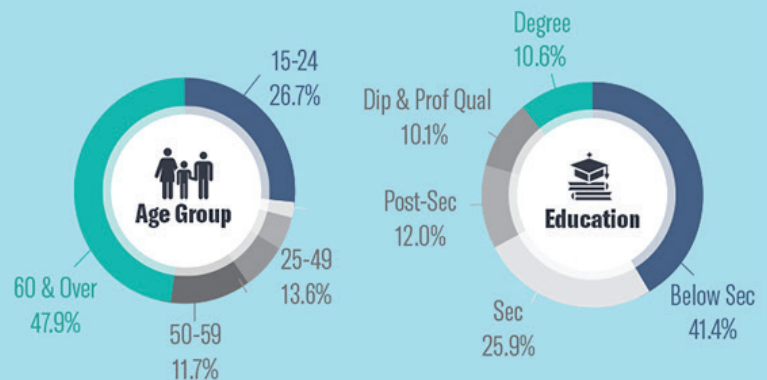
89.4% WERE FULL-TIME EMPLOYED RESIDENTS

BY TYPE OF EMPLOYMENT AMONG EMPLOYEES, 2020



RESIDENTS OUTSIDE LABOUR FORCE

BY AGE AND HIGHEST QUALIFICATION ATTAINED, 2020



Data pertain to residents and are for June periods, unless otherwise stated.