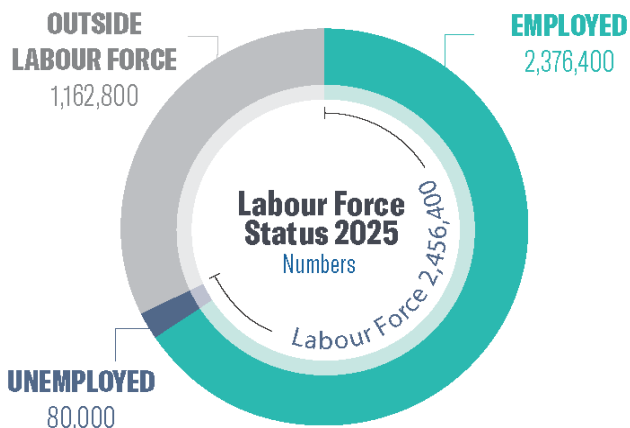


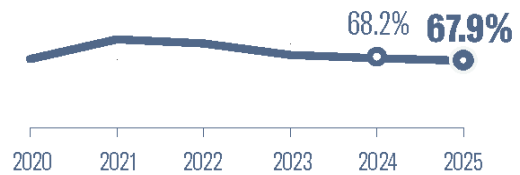
# KEY INDICATORS

## LABOUR FORCE



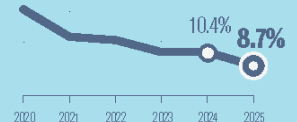
### LABOUR FORCE PARTICIPATION RATE

EASED FURTHER



**0.3%** (2025)

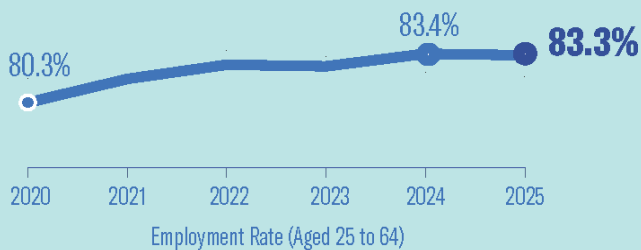
INCIDENCE OF DISCOURAGED WORKERS REMAINED LOW



THE SHARE OF POTENTIAL ENTRANTS DECLINED

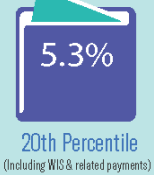
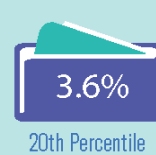
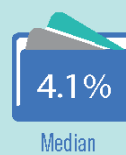
## EMPLOYMENT RATE

REMAINED HIGH



### REAL INCOMES CONTINUED TO GROW

(2024 - 2025)



Income including employer/platform operator CPF contributions of full-time employed residents

### TIME-RELATED UNDER-EMPLOYMENT RATE

DECLINED FURTHER

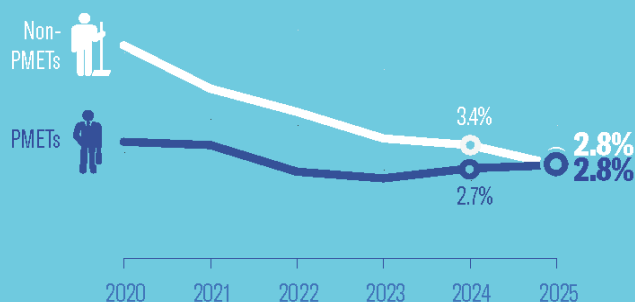


REAL INCOME GROWTH AT 20TH PERCENTILE OUTPACED THE MEDIAN OVER THE LONGER TERM



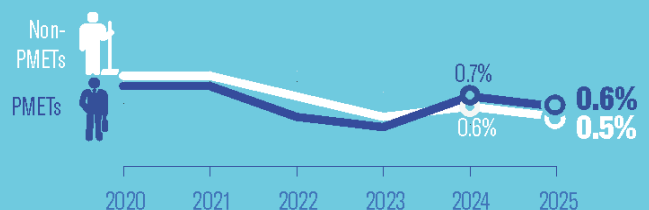
## UNEMPLOYMENT RATES

STAYED LOW FOR BOTH PMETS AND NON-PMETS



## LONG-TERM UNEMPLOYMENT RATES

IMPROVED

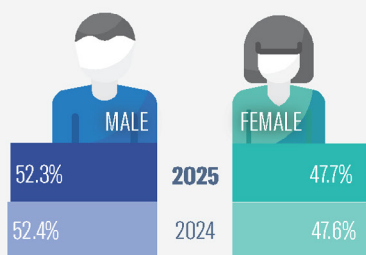


Data pertain to residents and are for June periods, unless otherwise stated.

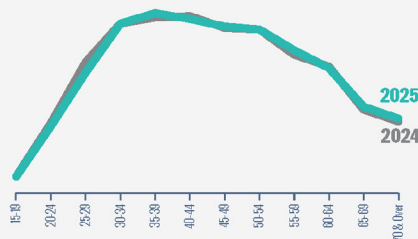
# PROFILE

## RESIDENT LABOUR FORCE

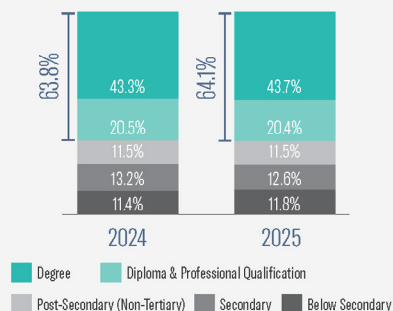
DISTRIBUTION BY SEX



DISTRIBUTION BY AGE

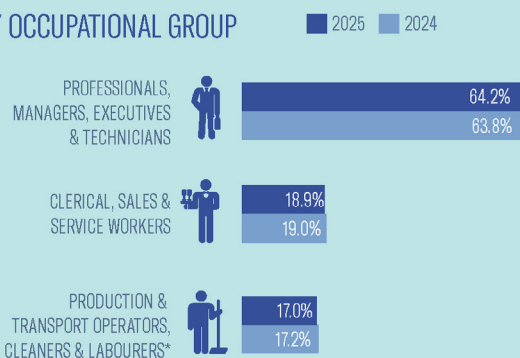


DISTRIBUTION BY HIGHEST QUALIFICATION ATTAINED



## EMPLOYED RESIDENTS

BY OCCUPATIONAL GROUP

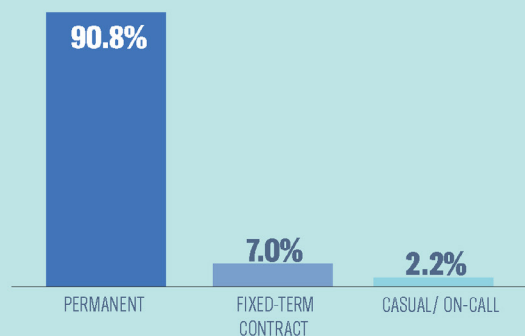


\* Includes Agricultural & Fishery Workers and Workers Not Elsewhere Classified

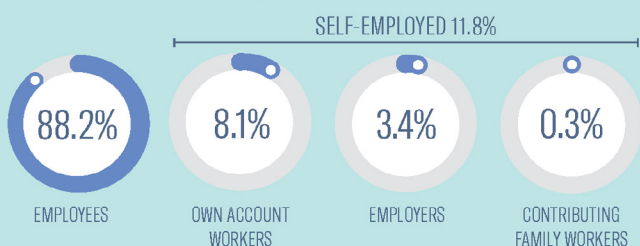
BY NATURE OF EMPLOYMENT, 2025



BY TYPE OF EMPLOYMENT AMONG EMPLOYEES, 2025

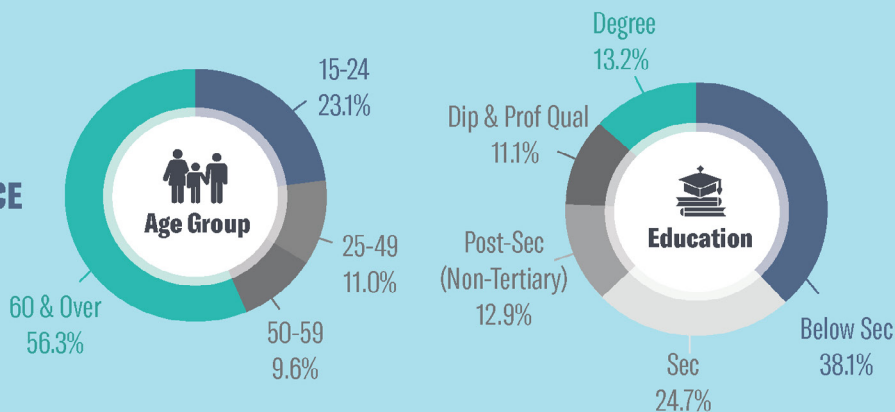


BY EMPLOYMENT STATUS, 2025



## RESIDENTS OUTSIDE LABOUR FORCE

BY AGE AND HIGHEST QUALIFICATION ATTAINED, 2025



Data pertain to residents and are for June periods, unless otherwise stated.