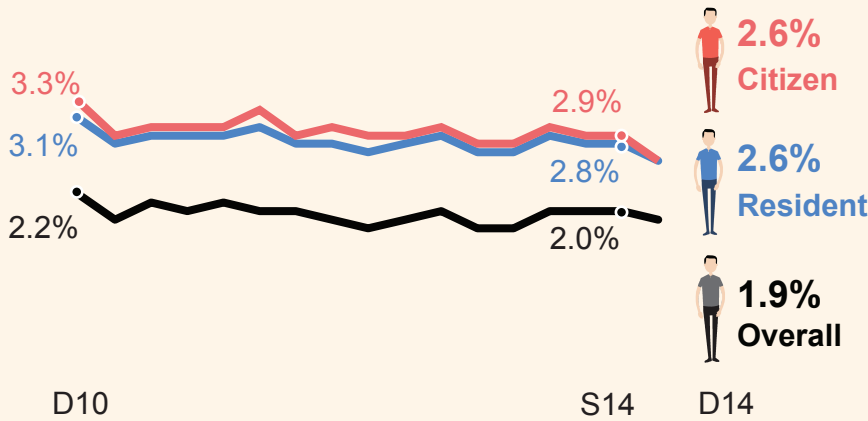


LABOUR MARKET 2014

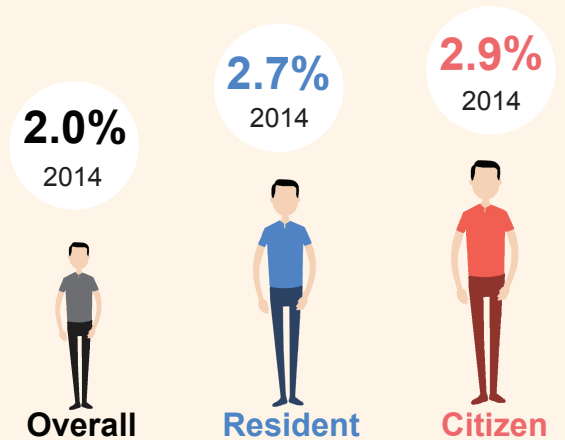


Unemployment stayed low

Unemployment Rate (Seasonally Adjusted)

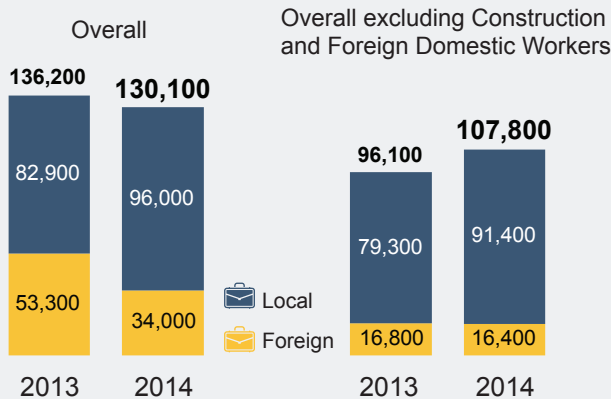


Unemployment Rate (Annual Average)



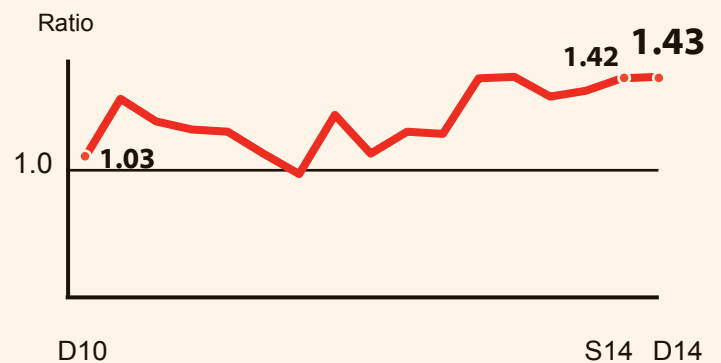
Employment grew at a slower pace in 2014

Annual Employment Change By Residential Status



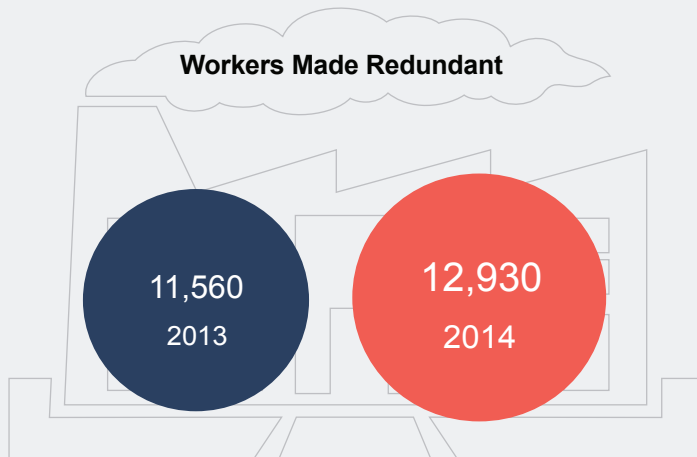
Job openings to job seekers ratio edged up

Ratio Of Job Vacancies To Unemployed Persons (Seasonally Adjusted)



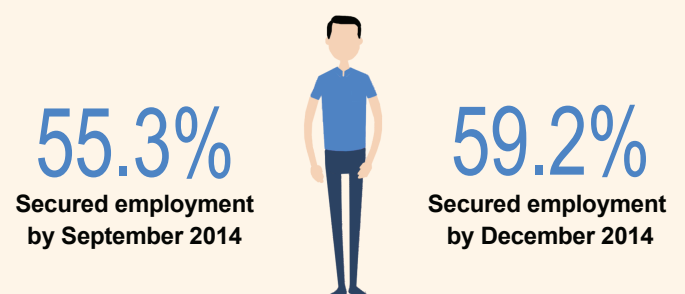
Redundancy rose in fourth quarter, amid on-going business restructuring

Workers Made Redundant



Rate of re-entry into employment continued to improve

Rate Of Re-entry Into Employment Of Residents Made Redundant (Within Six Months Of Redundancy)



Data pertain to private establishments each with at least 25 employees and the public sector.

Data pertain to re-entry rates as at end of quarter for residents made redundant in the previous quarter.